

## KIF2C Ab

[References\(2\)](#) [Images\(5\)](#)

Cat.#: DF7348                                  Concn.: ~1mg/ml                                  Mol.Wt.: 81kDa  
Size:    Source: Rabbit    Clonality: Polyclonal

Application:                                  WB 1:500-1:2000, IHC 1:50-1:200, IF/ICC 1:100-1:500  
\*The optimal dilutions should be determined by the end user.

Reactivity:    Human,Mouse,Rat

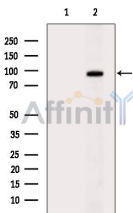
Storage:    Rabbit IgG in phosphate buffered saline , pH 7.4, 150mM NaCl, 0.02% sodium azide and 50% glycerol. Store at -20 °C. Stable for 12 months from date of receipt.

Purification:    The antiserum was purified by peptide affinity chromatography using SulfoLink™ Coupling Resin (Thermo Fisher Scientific).

Immunogen:    A synthesized peptide derived from human KIF2C, corresponding to a region within C-terminal amino acids.

Uniprot:    Q99661

Description:    The protein encoded by this gene is a member of kinesin-like protein family. Proteins of this family are microtubule-dependent molecular motors that transport organelles within cells and move chromosomes during cell division. This protein is important for anaphase chromosome segregation and may be required to coordinate the onset of sister centromere separation.



Western blot analysis of extracts from Hela cells(heat-shock treatment), using KIF2C Ab. The lane on the left was treated with blocking peptide.

**IMPORTANT:** For western blot, incubate membrane with diluted primary Ab in 5% w/v milk , 1X TBS, 0.1% Tween@20 at 4°C with gentle shaking, overnight.

For Research Use Only. Not for use in diagnostic and therapeutic procedures. Not for resale without express authorization.