

# SNAI1 Ab

[Images\(2\)](#)

Cat.#: BF0595	Concn.: ~1mg/ml	Mol.Wt.: 29kDa
Size:	Source: Mouse	Clonality: Monoclonal

**Application:** ELISA 1:10000, WB 1:500-1:2000  
 \*The optimal dilutions should be determined by the end user.

**Reactivity:** Human

**Storage:** Mouse IgG1 in phosphate buffered saline (without Mg<sup>2+</sup> and Ca<sup>2+</sup>), pH 7.4, 150mM NaCl, 0.02% sodium azide and 50% glycerol. Store at -20 °C. Stable for 12 months from date of receipt.

**Purification:** Affinity-chromatography.

**Immunogen:** Purified recombinant fragment of human SNAI1 expressed in E. Coli.

**Uniprot:** O95863

**Description:** This protein has many roles during postimplantation development. It is involved in embryonic mesoderm formation and its maintenance and may also be involved in chondrogenesis and in epithelial-mesenchymal inductive interactions.

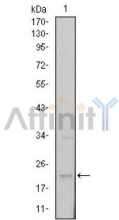


Figure 2: Western blot analysis using SNAI1 mouse mAb against NTERA-2 cell lysate.

**IMPORTANT:** For western blot, incubate membrane with diluted primary Ab in 5% w/v milk , 1X TBS, 0.1% Tween@20 at 4°C with gentle shaking, overnight.

For Research Use Only. Not for use in diagnostic and therapeutic procedures. Not for resale without express authorization.