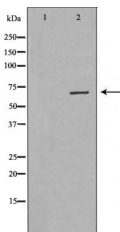


eIF4B Ab

[Images\(1\)](#)

Cat.#: DF7324	Concn.: ~1mg/ml	Mol.Wt.: 69kDa
Size:	Source: Rabbit	Clonality: Polyclonal
Application:	WB 1:500-1:2000, IHC 1:50-1:200, IF/ICC 1:100-1:500 *The optimal dilutions should be determined by the end user.	
Reactivity:	Human,Mouse,Rat	
Storage:	Rabbit IgG in phosphate buffered saline , pH 7.4, 150mM NaCl, 0.02% sodium azide and 50% glycerol. Store at -20 °C. Stable for 12 months from date of receipt.	
Purification:	The antiserum was purified by peptide affinity chromatography using SulfoLink™ Coupling Resin (Thermo Fisher Scientific).	
Immunogen:	A synthesized peptide derived from human eIF4B, corresponding to a region within the internal amino acids.	
Uniprot:	P23588	
Description:	Eukaryotic initiation factor 4B (eIF4B) is thought to assist the eIF4F complex in translation initiation. In plants, eIF4B is known to interact with the poly-(A) binding protein, increasing its poly-(A) binding activity . Heat shock and serum starvation cause dephosphorylation of eIF4B at multiple sites with kinetics similar to those of the corresponding inhibition of translation, while phosphorylation of eIF4B following insulin treatment correlates well with an observed increase in translation (2-5). Multiple kinases, including p70 S6 kinase, can phosphorylate eIF4B in vitro, and at least one serum-inducible eIF4B phosphorylation site is sensitive to rapamycin and LY294002 .	



Western blot analysis of NIH-3T3 cell lysates, using EIF4B Ab. The lane on the left was treated with the antigen-specific peptide.

IMPORTANT: For western blot, incubate membrane with diluted primary Ab in 5% w/v milk , 1X TBS, 0.1% Tween@20 at 4°C with gentle shaking, overnight.