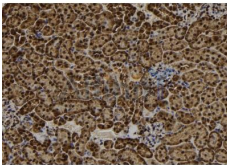


## RAD18 Ab

[References\(1\)](#) [Images\(4\)](#)

|               |  |                       |
|---------------|--|-----------------------|
| Cat.#: DF7314 | Concn.: ~1mg/ml  | Mol.Wt.: 56kDa        |
| Size:         | Source: Rabbit   | Clonality: Polyclonal |
| Application:  | WB 1:500-1:2000, IHC 1:50-1:200, IF/ICC 1:100-1:500<br>*The optimal dilutions should be determined by the end user.  |                       |
| Reactivity:   | Human,Mouse,Rat  |                       |
| Storage:      | Rabbit IgG in phosphate buffered saline , pH 7.4, 150mM NaCl, 0.02% sodium azide and 50% glycerol. Store at -20 °C. Stable for 12 months from date of receipt.   |                       |
| Purification: | The antiserum was purified by peptide affinity chromatography using SulfoLink™ Coupling Resin (Thermo Fisher Scientific).  |                       |
| Immunogen:    | A synthesized peptide derived from human RAD18, corresponding to a region within the internal amino acids.   |                       |
| Uniprot:      | Q9NS91   |                       |
| Description:  | The protein encoded by this gene is highly similar to <i>S. cerevisiae</i> DNA damage repair protein Rad18. Yeast Rad18 functions through its interaction with Rad6, which is an ubiquitin-conjugating enzyme required for post-replication repair of damaged DNA. Similar to its yeast counterpart, this protein is able to interact with the human homolog of yeast Rad6 protein through a conserved ring-finger motif. Mutation of this motif results in defective replication of UV-damaged DNA and hypersensitivity to multiple mutagens. |                       |



DF7314 at 1/100 staining Mouse kidney tissue by IHC-P. The sample was formaldehyde fixed and a heat mediated antigen retrieval step in citrate buffer was performed. The sample was then blocked and incubated with the Ab for 1.5 hours at 22°C. An HRP conjugated goat anti-rabbit Ab was used as the secondary Ab.

**IMPORTANT:** For western blot, incubate membrane with diluted primary Ab in 5% w/v milk , 1X TBS, 0.1% Tween@20 at 4°C with gentle shaking, overnight.

For Research Use Only. Not for use in diagnostic and therapeutic procedures. Not for resale without express authorization.