

## CHI3L1 Ab

[Images\(1\)](#)

Cat.#: DF7223                                      Concn.: ~1mg/ml                                      Mol.Wt.: 43kD  
Size:    Source: Rabbit    Clonality: Polyclonal

Application:                                      WB 1:500-1:2000, IHC 1:50-1:100  
  \*The optimal dilutions should be determined by the end user.

Reactivity:                                        Human,Mouse,Rat

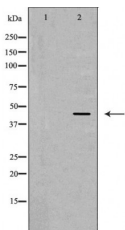
Storage:    Rabbit IgG in phosphate buffered saline , pH 7.4, 150mM NaCl, 0.02% sodium azide and 50% glycerol. Store at -20 °C. Stable for 12 months from date of receipt.

Purification:                                    The antiserum was purified by peptide affinity chromatography using SulfoLink™ Coupling Resin (Thermo Fisher Scientific).

Immunogen:                                      A synthesized peptide derived from human CHI3L1, corresponding to a region within the internal amino acids.

Uniprot:    P36222

Description:                                      Chitinases catalyze the hydrolysis of chitin, which is an abundant glycopolymer found in insect exoskeletons and fungal cell walls. The glycoside hydrolase 18 family of chitinases includes eight human family members. This gene encodes a glycoprotein member of the glycosyl hydrolase 18 family. The protein lacks chitinase activity and is secreted by activated macrophages, chondrocytes, neutrophils and synovial cells. The protein is thought to play a role in the process of inflammation and tissue remodeling.



Western blot analysis of extracts from TPH1 , using CHI3L1 Ab. The lane on the left was treated with the antigen-specific peptide.

**IMPORTANT:** For western blot, incubate membrane with diluted primary Ab in 5% w/v milk , 1X TBS, 0.1% Tween@20 at 4°C with gentle shaking, overnight.

For Research Use Only. Not for use in diagnostic and therapeutic procedures. Not for resale without express authorization.