

# NF kappaB p100/p52 Ab

[Images\(1\)](#)

Cat.#: DF7190	Concn.: ~1mg/ml	Mol.Wt.: 97kDa
Size:	Source: Rabbit	Clonality: Polyclonal

**Application:** WB 1:500-1:2000, IF/ICC 1:100-1:500  
 \*The optimal dilutions should be determined by the end user.

**Reactivity:** Human,Mouse,Rat

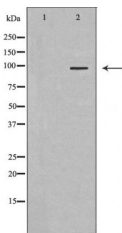
**Storage:** Rabbit IgG in phosphate buffered saline , pH 7.4, 150mM NaCl, 0.02% sodium azide and 50% glycerol. Store at -20 °C. Stable for 12 months from date of receipt.

**Purification:** The antiserum was purified by peptide affinity chromatography using SulfoLink™ Coupling Resin (Thermo Fisher Scientific).

**Immunogen:** A synthesized peptide derived from human NF kappaB p100/p52, corresponding to a region within C-terminal amino acids.

**Uniprot:** Q00653

**Description:** This gene encodes one of the subunits of the transcription factor complex nuclear factor-kappa-B (NFkB). The NFkB transcription factor complex is expressed in numerous cell types and functions as a central activator of genes involved in inflammation and immune function. The NFkB complex can consist of different subunits that form both homo- or heterodimers which bind specific kappa-B elements in target genes. This gene encodes the p100 subunit that is processed into the active p52 subunit. This protein can function as both a transcriptional activator and repressor, depending on its dimer partner. Alternate splicing results in both coding and non-coding variants.



Western blot analysis of HeLa whole cell lysates, using NFKB2 Ab. The lane on the left was treated with the antigen-specific peptide.

**IMPORTANT:** For western blot, incubate membrane with diluted primary Ab in 5% w/v milk , 1X TBS, 0.1% Tween@20 at 4°C with gentle shaking, overnight.

For Research Use Only. Not for use in diagnostic and therapeutic procedures. Not for resale without express authorization.