

## MC2R Ab

[Images\(1\)](#)

Cat.#: DF7142                      Concn.: ~1mg/ml                      Mol.Wt.: 34kDa  
Size:                                      Source: Rabbit                              Clonality: Polyclonal

Application:                      WB 1:1000-1:2000, IF/ICC 1:100-1:500  
\*The optimal dilutions should be determined by the end user.

Reactivity:                      Human,Mouse,Rat

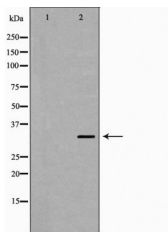
Storage:                              Rabbit IgG in phosphate buffered saline , pH 7.4, 150mM NaCl, 0.02% sodium azide and 50% glycerol. Store at -20 °C. Stable for 12 months from date of receipt.

Purification:                      The antiserum was purified by peptide affinity chromatography using SulfoLink™ Coupling Resin (Thermo Fisher Scientific).

Immunogen:                      A synthesized peptide derived from human MC2R, corresponding to a region within N-terminal amino acids.

Uniprot:                              Q01718

Description:                      MC2R encodes one member of the five-member G-protein associated melanocortin receptor family. Melanocortins (melanocyte-stimulating hormones and adrenocorticotrophic hormone) are peptides derived from pro-opiomelanocortin (POMC). MC2R is selectively activated by adrenocorticotrophic hormone, whereas the other four melanocortin receptors recognize a variety of melanocortin ligands. Mutations in MC2R can result in familial glucocorticoid deficiency.



Western blot analysis of extracts from 293 lysates, using MC2R Ab. The lane on the left was treated with the antigen-specific peptide.

**IMPORTANT:** For western blot, incubate membrane with diluted primary Ab in 5% w/v milk , 1X TBS, 0.1% Tween@20 at 4°C with gentle shaking, overnight.

For Research Use Only. Not for use in diagnostic and therapeutic procedures. Not for resale without express authorization.