

B Raf Ab

[Images\(2\)](#)

Cat.#: DF7134
Size:

Concn.: ~1mg/ml
Source: Rabbit

Mol.Wt.: 84kDa
Clonality: Polyclonal

Application:

WB 1:500-1:2000, IHC 1:50-1:200

*The optimal dilutions should be determined by the end user.

Reactivity:

Human,Mouse,Rat

Storage:

Rabbit IgG in phosphate buffered saline , pH 7.4, 150mM NaCl, 0.02% sodium azide and 50% glycerol. Store at -20 °C. Stable for 12 months from date of receipt.

Purification:

The antiserum was purified by peptide affinity chromatography using SulfoLink™ Coupling Resin (Thermo Fisher Scientific).

Immunogen:

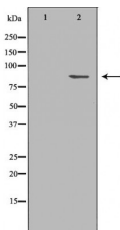
A synthesized peptide derived from human B Raf, corresponding to a region within the internal amino acids.

Uniprot:

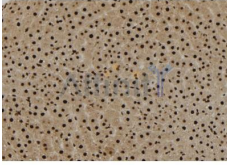
P15056

Description:

BRAF: v-raf murine sarcoma viral oncogene homolog B1, also known as BRAF1; RAFB1; B-RAF1; FLJ95109. Entrez Protein NP_004324. It is the main effectors recruited by GTP-bound Ras to activate the MEK-MAP kinase pathway. B-Raf contains three consensus Akt phosphorylationsites (Ser364, Ser428, and Thr439). B-Raf is a key regulatory molecule of the mitogen-activated protein kinase kinase (MEK), it has a long amino-terminal region,the region is essential for homo-dimerization of B-Raf and hetero-dimerization of B-Raf and c-Raf at the plasma membrane, followed by phosphorylation of Thr118 in the amino-terminal B-Raf-specific region. Notably, in calcium ionophore-stimulated HeLa cells, B-Raf could propagate signals to MEK under the basal level of GTP-Ras.



Western blot analysis of HeLa whole cell lysates, using BRAF Ab. The lane on the left was treated with the antigen-specific peptide.



DF7134 at 1/100 staining Rat liver tissue by IHC-P. The sample was formaldehyde fixed and a heat mediated antigen retrieval step in citrate buffer was performed. The sample was then blocked and incubated with the Ab for 1.5 hours at 22°C. An HRP conjugated goat anti-rabbit Ab was used as the secondary Ab.

IMPORTANT: For western blot, incubate membrane with diluted primary Ab in 5% w/v milk , 1X TBS, 0.1% Tween@20 at 4°C with gentle shaking, overnight.

For Research Use Only. Not for use in diagnostic and therapeutic procedures. Not for resale without express authorization.