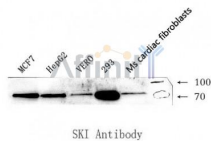


SKI Ab

[Images\(1\)](#)

Cat.#: DF7090	Concn.: ~1mg/ml	Mol.Wt.: 80kDa
Size:	Source: Rabbit	Clonality: Polyclonal
Application:	WB 1:500-1000 *The optimal dilutions should be determined by the end user.	
Reactivity:	Human,Mouse,Rat,Monkey	
Storage:	Rabbit IgG in phosphate buffered saline , pH 7.4, 150mM NaCl, 0.02% sodium azide and 50% glycerol. Store at -20 °C. Stable for 12 months from date of receipt.	
Purification:	The antiserum was purified by peptide affinity chromatography using SulfoLink™ Coupling Resin (Thermo Fisher Scientific).	
Immunogen:	A synthesized peptide derived from human SKI, corresponding to a region within the internal amino acids.	
Uniprot:	P12755	
Description:	The Ski protein is a nuclear protooncprotein that is associated with tumors at high cellular concentrations.It has been shown to interfere with normal cellular functioning by both directly impeding expression of certain genes inside the nucleus of the cell and disrupting signaling proteins that activate genes.This protein may play a role in terminal differentiation of skeletal muscle cells but not in the determination of cells to the myogenic lineage. May functions in TGF-beta signaling.	



Western blot analysis of extrats from various samples.

lane1:MCF7,
lane2:HepG2,
lane3:VERO,
lane4:293,
lane5:mouse cardiac fibroblasts

IMPORTANT: For western blot, incubate membrane with diluted primary Ab in 5% w/v milk , 1X TBS, 0.1% Tween@20 at 4°C with gentle shaking, overnight.

For Research Use Only. Not for use in diagnostic and therapeutic procedures. Not for resale without express authorization.