

GNAO1 Ab

[Images\(2\)](#)

Cat.#: DF6975	Concn.: ~1mg/ml	Mol.Wt.: 40kDa
Size:	Source: Rabbit	Clonality: Polyclonal

Application: WB 1:500-1:2000, IHC 1:50-1:200
*The optimal dilutions should be determined by the end user.

Reactivity: Human,Mouse,Rat

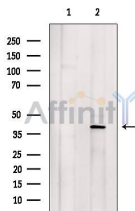
Storage: Rabbit IgG in phosphate buffered saline , pH 7.4, 150mM NaCl, 0.02% sodium azide and 50% glycerol. Store at -20 °C. Stable for 12 months from date of receipt.

Purification: The antiserum was purified by peptide affinity chromatography using SulfoLink™ Coupling Resin (Thermo Fisher Scientific).

Immunogen: A synthesized peptide derived from human GNAO1, corresponding to a region within the internal amino acids.

Uniprot: P09471

Description: Heterotrimeric G proteins are membrane bound GTPases that are linked to 7-TM receptors. Each G protein contains an alpha-, beta- and gamma-subunit and is bound to GDP in the 'off' state. Ligand-receptor binding results in detachment of the G protein, switching it to an 'on' state and permitting Galpha activation of second messenger signalling cascades. There are several types of Galpha proteins; Galphas and Galphai bind directly to adenylyl cyclase and stimulate or inhibit its activity, leading to an increase or decrease in cAMP levels respectively.



Western blot analysis of extracts from Rat brain, using GNAO1 Ab. The lane on the left was treated with blocking peptide.

IMPORTANT: For western blot, incubate membrane with diluted primary Ab in 5% w/v milk , 1X TBS, 0.1% Tween@20 at 4°C with gentle shaking, overnight.

For Research Use Only. Not for use in diagnostic and therapeutic procedures. Not for resale without express authorization.