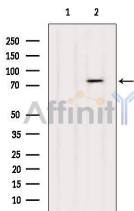


FOXM1 Ab

[References\(4\)](#) [Images\(4\)](#)

Cat.#: DF6962	Concn.: ~1mg/ml	Mol.Wt.: 84kD, 100-130kD
Size:	Source: Rabbit	Clonality: Polyclonal
Application:	WB 1:500-1:2000, IHC 1:50-1:200 *The optimal dilutions should be determined by the end user.	
Reactivity:	Human,Mouse,Rat	
Storage:	Rabbit IgG in phosphate buffered saline , pH 7.4, 150mM NaCl, 0.02% sodium azide and 50% glycerol. Store at -20 °C. Stable for 12 months from date of receipt.	
Purification:	The antiserum was purified by peptide affinity chromatography using SulfoLink™ Coupling Resin (Thermo Fisher Scientific).	
Immunogen:	A synthesized peptide derived from human FOXM1, corresponding to a region within N-terminal amino acids.	
Uniprot:	Q08050	
Description:	Forkhead box M1 (FoxM1) is a forkhead box family transcription factor that regulates a number of genes throughout the cell cycle to help control DNA replication, mitosis and cell proliferation. FoxM1 expression increases during G1 and S and reaches maximum levels in G2/M (1-3). Nuclear translocation occurs just before entry into G2/M and is associated with FoxM1 phosphorylation . Phosphorylation of FoxM1 by MAPK (Ser331 Ser704), Cyclin/Cdk (Thr600, Thr611, Thr672), Plk1 (Ser715, Ser724), and Chk2 (Ser376) stabilizes and activates FoxM1 (4-7). Forkhead box M1 is expressed in all embryonic tissues but is restricted to proliferating tissues in adults . Recent studies have shown that FoxM1 expression is negatively regulated by p53 (9,10).	



Western blot analysis of extracts from 3T3, using FOXM1 Ab. The lane on the left was treated with blocking peptide.

IMPORTANT: For western blot, incubate membrane with diluted primary Ab in 5% w/v milk , 1X TBS, 0.1% Tween@20 at 4°C with gentle shaking, overnight.



Affinity Biosciences
website: www.affbiotech.com
order: order@affbiotech.com

procedures. Not for resale without express authorization.