

EPB41 Ab

[Images\(2\)](#)

Cat.#: DF6959 Concn.: ~1mg/ml Mol.Wt.: 97kDa
Size: Source: Rabbit Clonality: Polyclonal

Application: WB 1:500-1:2000, IHC 1:50-1:200, IF/ICC 1:100-1:500
*The optimal dilutions should be determined by the end user.

Reactivity: Human,Mouse,Rat

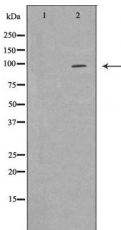
Storage: Rabbit IgG in phosphate buffered saline , pH 7.4, 150mM NaCl, 0.02% sodium azide and 50% glycerol. Store at -20 °C. Stable for 12 months from date of receipt.

Purification: The antiserum was purified by peptide affinity chromatography using SulfoLink™ Coupling Resin (Thermo Fisher Scientific).

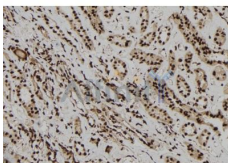
Immunogen: A synthesized peptide derived from human EPB41, corresponding to a region within the internal amino acids.

Uniprot: P11171

Description: The protein encoded by this gene, together with spectrin and actin, constitute the red cell membrane cytoskeletal network. This complex plays a critical role in erythrocyte shape and deformability. Mutations in this gene are associated with type 1 elliptocytosis (EL1). Alternatively spliced transcript variants encoding different isoforms have been described for this gene.



Western blot analysis of 293T whole cell lysates, using EPB41 Ab. The lane on the left was treated with the antigen-specific peptide.



DF6959 at 1/100 staining Human kidney tissue by IHC-P. The sample was formaldehyde fixed and a heat mediated antigen retrieval step in citrate buffer was performed. The sample was then blocked and incubated with the Ab for 1.5 hours at 22°C. An HRP conjugated goat anti-rabbit Ab was used as the secondary Ab.

IMPORTANT: For western blot, incubate membrane with diluted primary Ab

in 5% w/v milk , 1X TBS, 0.1% Tween@20 at 4°C with gentle shaking,
overnight.

For Research Use Only. Not for use in diagnostic and therapeutic
procedures. Not for resale without express authorization.