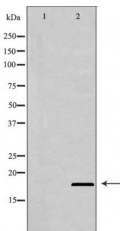


BIK Ab

[Images\(1\)](#)

Cat.#: DF6958	Concn.: ~1mg/ml	Mol.Wt.: 18kDa
Size:	Source: Rabbit	Clonality: Polyclonal
Application:	WB 1:500-1:2000, IHC 1:50-1:200, IF/ICC 1:100-1:500 *The optimal dilutions should be determined by the end user.	
Reactivity:	Human	
Storage:	Rabbit IgG in phosphate buffered saline , pH 7.4, 150mM NaCl, 0.02% sodium azide and 50% glycerol. Store at -20 °C. Stable for 12 months from date of receipt.	
Purification:	The antiserum was purified by peptide affinity chromatography using SulfoLink™ Coupling Resin (Thermo Fisher Scientific).	
Immunogen:	A synthesized peptide derived from human BIK, corresponding to a region within N-terminal amino acids.	
Uniprot:	Q13323	
Description:	Bik/Nbk (Bcl-2-interacting killer/natural born killer) is a potent pro-apoptotic protein belonging to a group of Bcl-2 family members that includes Bad, Bid, Bim, Hrk, and Noxa, containing a BH3 domain but lacking other conserved domains, BH1 or BH2 (1,2). Functionally, Bik is able to bind to and antagonize anti-apoptotic Bcl-2 family members including Bcl-2, Bcl-xL, and viral homologs E1B-19K and EBV-BHFR1. The BH3 domain of Bik is essential for its apoptotic activity and interaction with survival proteins . Phosphorylation of Bik is correlated with an increase in its pro-apoptotic activity .	



Western blot analysis of extracts from Raji , using BIK Ab. The lane on the left was treated with the antigen-specific peptide.

IMPORTANT: For western blot, incubate membrane with diluted primary Ab in 5% w/v milk , 1X TBS, 0.1% Tween@20 at 4°C with gentle shaking, overnight.

For Research Use Only. Not for use in diagnostic and therapeutic procedures. Not for resale without express authorization.