

PATE3 Ab

[Images\(1\)](#)

Cat.#: DF6927 Concn.: ~1mg/ml Mol.Wt.: 12kDa
Size: Source: Rabbit Clonality: Polyclonal

Application: WB 1:500-1:2000, IHC 1:50-1:200
*The optimal dilutions should be determined by the end user.

Reactivity: Human,Mouse,Rat

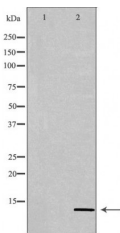
Storage: Rabbit IgG in phosphate buffered saline , pH 7.4, 150mM NaCl, 0.02% sodium azide and 50% glycerol. Store at -20 °C. Stable for 12 months from date of receipt.

Purification: The antiserum was purified by peptide affinity chromatography using SulfoLink™ Coupling Resin (Thermo Fisher Scientific).

Immunogen: A synthesized peptide derived from human PATE3, corresponding to a region within the internal amino acids.

Uniprot: B3GLJ2

Description: PATE3 (prostate and testis expressed protein 3), also known as PATE-DJ or HEL-127, is a 98 amino acid protein that contains one UPAR/Ly6 domain and belongs to the PATE family. PATE3 is a secreted protein that is expressed in prostate and testis. The gene that encodes PATE3 consists of around 3,490 bases and maps to human chromosome 11p15.5. Chromosome 11, which comprises approximately 4% of the human genome, is considered a gene and disease association-dense chromosome. The chromosome 11 encoded Atm gene is important for regulation of cell cycle arrest and apoptosis following double strand DNA breaks. Atm mutation leads to the disorder known as ataxia-telangiectasia.



Western blot analysis of extracts from HeLa, using PATE3 Ab. The lane on the left was treated with the antigen-specific peptide.

IMPORTANT: For western blot, incubate membrane with diluted primary Ab in 5% w/v milk , 1X TBS, 0.1% Tween@20 at 4°C with gentle shaking, overnight.

For Research Use Only. Not for use in diagnostic and therapeutic procedures. Not for resale without express authorization.