

PSMA6 Ab

[Images\(3\)](#)

Cat.#: DF6911	Concn.: ~1mg/ml	Mol.Wt.: 27kDa
Size:	Source: Rabbit	Clonality: Polyclonal

Application: WB 1:500-1:2000, IHC 1:50-1:200
 *The optimal dilutions should be determined by the end user.

Reactivity: Human,Mouse,Rat

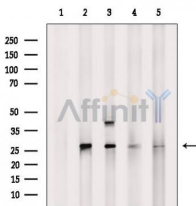
Storage: Rabbit IgG in phosphate buffered saline , pH 7.4, 150mM NaCl, 0.02% sodium azide and 50% glycerol. Store at -20 °C. Stable for 12 months from date of receipt.

Purification: The antiserum was purified by peptide affinity chromatography using SulfoLink™ Coupling Resin (Thermo Fisher Scientific).

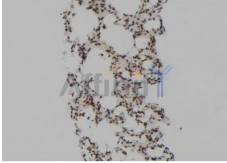
Immunogen: A synthesized peptide derived from human PSMA6, corresponding to a region within the internal amino acids.

Uniprot: P60900

Description: The 20S proteasome is the major proteolytic enzyme complex involved in intracellular protein degradation. It consists of four stacked rings, each with seven distinct subunits. The two outer layers are identical rings composed of ? subunits (called PSMA6), and the two inner layers are identical rings composed of ? subunits. While the catalytic sites are located on the ? rings (1-3), the ? subunits are important for assembly and as binding sites for regulatory proteins . Seven different ? and ten different ? proteasome genes have been identified in mammals . PA700, PA28, and PA200 are three major protein complexes that function as activators of the 20S proteasome.



Western blot analysis of extracts from various samples, using PSMA6 Ab.
 Lane 1: B16, treated with blocking peptide;
 Lane 2: B16;
 Lane 3: Rat heart;
 Lane 4: 2780;
 Lane 5: Mcf7.



DF6911 at 1/100 staining Mouse lung tissue by IHC-P. The sample was formaldehyde fixed and a heat mediated antigen retrieval step in citrate buffer was performed. The sample was then blocked and incubated with the Ab for 1.5 hours at 22°C. An HRP conjugated goat anti-rabbit Ab was used as the secondary Ab.

IMPORTANT: For western blot, incubate membrane with diluted primary Ab in 5% w/v milk , 1X TBS, 0.1% Tween@20 at 4°C with gentle shaking, overnight.

For Research Use Only. Not for use in diagnostic and therapeutic procedures. Not for resale without express authorization.