

p63 Ab

[Images\(1\)](#)

Cat.#: DF6860	Concn.: ~1mg/ml	Mol.Wt.: 77kDa
Size:	Source: Rabbit	Clonality: Polyclonal

Application: WB 1:500-1:2000, IHC 1:50-1:200, IF/ICC 1:100-1:500
*The optimal dilutions should be determined by the end user.

Reactivity: Human,Mouse,Rat,Monkey

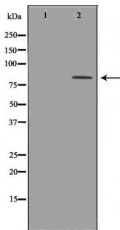
Storage: Rabbit IgG in phosphate buffered saline , pH 7.4, 150mM NaCl, 0.02% sodium azide and 50% glycerol. Store at -20 °C. Stable for 12 months from date of receipt.

Purification: The antiserum was purified by peptide affinity chromatography using SulfoLink™ Coupling Resin (Thermo Fisher Scientific).

Immunogen: A synthesized peptide derived from human p63, corresponding to a region within C-terminal amino acids.

Uniprot: Q9H3D4

Description: The p53 tumor suppressor protein plays a major role in cellular response to DNA damage and other genomic aberrations. Activation of p53 can lead to either cell cycle arrest and DNA repair or apoptosis . In addition to p53, mammalian cells contain two p53 family members, p63 and p73, which are similar to p53 in both structure and function . While p63 can induce p53-responsive genes and apoptosis, mutation of p63 rarely results in tumors . Amplification of the p63 gene is frequently observed in squamous cell carcinomas of the lung, head and neck (2,3). The p63 gene contains an alternative transcription initiation site that yields a 40 kDa deltaNp63 lacking the transactivation domain, and alternative splicing at the carboxy-terminus yields the alpha, beta and gamma isoforms (3,4).



Western blot analysis of COS7 cell lysates, using TP63 Ab. The lane on the left was treated with the antigen-specific peptide.

IMPORTANT: For western blot, incubate membrane with diluted primary Ab in 5% w/v milk , 1X TBS, 0.1% Tween@20 at 4°C with gentle shaking, overnight.



Affinity Biosciences
website: www.affbiotech.com
order: order@affbiotech.com

procedures. Not for resale without express authorization.