

## THY1 Ab

[Images\(1\)](#)

Cat.#: DF6849                      Concn.: ~1mg/ml                      Mol.Wt.: 18kDa  
Size:                                      Source: Rabbit                              Clonality: Polyclonal

Application:                      WB 1:500-1:2000, IHC 1:50-1:200, IF/ICC 1:100-1:500  
\*The optimal dilutions should be determined by the end user.

Reactivity:                      Human,Mouse,Rat

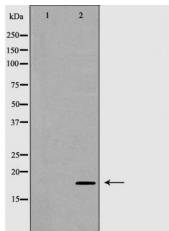
Storage:                              Rabbit IgG in phosphate buffered saline , pH 7.4, 150mM NaCl, 0.02% sodium azide and 50% glycerol. Store at -20 °C. Stable for 12 months from date of receipt.

Purification:                      The antiserum was purified by peptide affinity chromatography using SulfoLink™ Coupling Resin (Thermo Fisher Scientific).

Immunogen:                      A synthesized peptide derived from human THY1, corresponding to a region within the internal amino acids.

Uniprot:                              P04216

Description:                      Thy1 is a GPI-anchored, developmentally regulated protein involved in various signaling cascades that mediate neurite outgrowth, T cell activation, tumor suppression, apoptosis, and fibrosis . It is highly expressed on the surface of adult neurons and is thought to play a role in modulating adhesive and migratory events, such as neurite extension (1,2). Decreased Thy1 expression is associated with the development of epithelial ovarian cancer, revealing its role as a putative tumor suppressor gene of human ovarian cancer (3,4). Thy1 knockout mice have impaired cutaneous immune responses and abnormal retinal development (5,6). Thy1 is epigenetically regulated, or deregulated in some disease states, such as pulmonary fibrosis.



Western blot analysis of extracts from fetal brain, using THY1 Ab. The lane on the left was treated with the antigen-specific peptide.

**IMPORTANT:** For western blot, incubate membrane with diluted primary Ab in 5% w/v milk , 1X TBS, 0.1% Tween@20 at 4°C with gentle shaking, overnight.

For Research Use Only. Not for use in diagnostic and therapeutic procedures. Not for resale without express authorization.