

## LCN2 Ab

[References\(7\)](#) [Images\(6\)](#)

Cat.#: DF6816  
Size:

Concn.: ~1mg/ml  
Source: Rabbit

Mol.Wt.: 23kDa  
Clonality: Polyclonal

Application:

WB 1:500-1:2000, IHC 1:50-1:200

\*The optimal dilutions should be determined by the end user.

Reactivity:

Human,Mouse,Rat

Storage:

Rabbit IgG in phosphate buffered saline , pH 7.4, 150mM NaCl, 0.02% sodium azide and 50% glycerol. Store at -20 °C. Stable for 12 months from date of receipt.

Purification:

The antiserum was purified by peptide affinity chromatography using SulfoLink™ Coupling Resin (Thermo Fisher Scientific).

Immunogen:

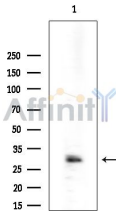
A synthesized peptide derived from human LCN2, corresponding to a region within the internal amino acids.

Uniprot:

P80188

Description:

Lipocalin-2, a member of the lipocalin family of proteins, was originally identified as a gelatinase-associated component of neutrophil secretory granules . Lipocalin-2 is involved in innate immunity, iron homeostasis, and apoptosis. Lipocalin-2 limits bacterial growth by binding to bacterial siderophores and sequestering iron (2-4). In mammalian cells, iron-loaded lipocalin-2 binds to its receptor, 24p3R, and is internalized, thereby releasing iron and increasing the intracellular iron concentration . Conversely, iron-free lipocalin-2 promotes apoptosis . Lipocalin-2 is also expressed in adipose tissue and promotes insulin resistance in cultured mouse adipocytes .



Western blot analysis of extracts from COLO205 cells(heat-shock treatment), using LCN2 Ab at 1/1000 dilution.  
Observed bands:30kD.

**IMPORTANT:** For western blot, incubate membrane with diluted primary Ab in 5% w/v milk , 1X TBS, 0.1% Tween@20 at 4°C with gentle shaking, overnight.

For Research Use Only. Not for use in diagnostic and therapeutic procedures. Not for resale without express authorization.