

IL13 Ab

[Images\(2\)](#)

Cat.#: DF6813
Size:

Concn.: ~1mg/ml
Source: Rabbit

Mol.Wt.: 16kDa
Clonality: Polyclonal

Application:

WB 1:500-1:2000, IHC 1:50-1:200
*The optimal dilutions should be determined by the end user.

Reactivity:

Human,Mouse,Rat

Storage:

Rabbit IgG in phosphate buffered saline , pH 7.4, 150mM NaCl, 0.02% sodium azide and 50% glycerol. Store at -20 °C. Stable for 12 months from date of receipt.

Purification:

The antiserum was purified by peptide affinity chromatography using SulfoLink™ Coupling Resin (Thermo Fisher Scientific).

Immunogen:

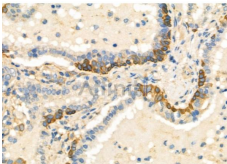
A synthesized peptide derived from human IL13, corresponding to a region within N-terminal amino acids.

Uniprot:

P35225

Description:

IL-13 is produced by T cells and is important in the TH2 response. IL-13 targets include B cells, eosinophils, fibroblasts, mast cells and macrophages (1-3). IL-13 binds specifically to IL-13R?1 that complexes with IL-4R? to form the Type II IL-4R. Jak1 and Tyk2 are activated and signal through Stat3 and Stat6 . IL-13R?2 is a different gene product, lacks the intracellular domain, does not complex with IL-4R? and does not signal (1,6,7). The extracellular domain of IL-13R?2 is often elevated in diseased states. IL-13 plays key roles in airway hyperresponsiveness (AHR) of allergic asthma (1,4,5) and modulates resistance to parasitic organisms .



DF6813 at 1/100 staining Human prostate cancer by IHC-P. The sample was formaldehyde fixed and a heat mediated antigen retrieval step in citrate buffer was performed. The sample was then blocked and incubated with the primary Ab at 4°C overnight. An HRP conjugated anti-Rabbit Ab was used as the secondary Ab.

IMPORTANT: For western blot, incubate membrane with diluted primary Ab in 5% w/v milk , 1X TBS, 0.1% Tween@20 at 4°C with gentle shaking, overnight.

For Research Use Only. Not for use in diagnostic and therapeutic procedures. Not for resale without express authorization.