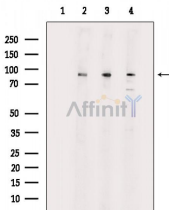


## beta Catenin Ab

[References\(2\)](#) [Images\(6\)](#)

Cat.#: DF6794	Concn.: ~1mg/ml	Mol.Wt.: 85~95kD
Size:	Source: Rabbit	Clonality: Polyclonal
Application:	WB 1:500-1:2000, IHC 1:50-1:200, IF/ICC 1:100-1:500 *The optimal dilutions should be determined by the end user.	
Reactivity:	Human,Mouse,Rat	
Storage:	Rabbit IgG in phosphate buffered saline , pH 7.4, 150mM NaCl, 0.02% sodium azide and 50% glycerol. Store at -20 °C. Stable for 12 months from date of receipt.	
Purification:	The antiserum was purified by peptide affinity chromatography using SulfoLink™ Coupling Resin (Thermo Fisher Scientific).	
Immunogen:	A synthesized peptide derived from human beta Catenin, corresponding to a region within C-terminal amino acids.	
Uniprot:	P35222	
Description:	<p><math>\beta</math>-Catenin is a key downstream effector in the Wnt signaling pathway . It is implicated in two major biological processes in vertebrates: early embryonic development and tumorigenesis . CK1 phosphorylates <math>\beta</math>-catenin at Ser45. This phosphorylation event primes <math>\beta</math>-catenin for subsequent phosphorylation by GSK-3<math>\beta</math> (4-6). GSK-3<math>\beta</math> destabilizes <math>\beta</math>-catenin by phosphorylating it at Ser33, Ser37, and Thr41 . Mutations at these sites result in the stabilization of <math>\beta</math>-catenin protein levels and have been found in many tumor cell lines .</p>	



Western blot analysis of extracts from various samples, using beta Catenin Ab.

- Lane 1: Rat brain, blocked with antigen-specific peptides,
- Lane 2: Rat brain,
- Lane 3: Rat kidney,
- Lane 4: Mouse brain.

**IMPORTANT:** For western blot, incubate membrane with diluted primary Ab in 5% w/v milk , 1X TBS, 0.1% Tween@20 at 4°C with gentle shaking, overnight.

For Research Use Only. Not for use in diagnostic and therapeutic procedures. Not for resale without express authorization.