

CCNT1 Ab

[Images\(1\)](#)

Cat.#: DF6787 Concn.: ~1mg/ml Mol.Wt.: 81kDa
Size: Source: Rabbit Clonality: Polyclonal

Application: WB 1:500-1:2000, IHC 1:50-1:200, IF/ICC 1:100-1:500
*The optimal dilutions should be determined by the end user.

Reactivity: Human,Mouse,Rat

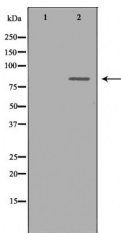
Storage: Rabbit IgG in phosphate buffered saline , pH 7.4, 150mM NaCl, 0.02% sodium azide and 50% glycerol. Store at -20 °C. Stable for 12 months from date of receipt.

Purification: The antiserum was purified by peptide affinity chromatography using SulfoLink™ Coupling Resin (Thermo Fisher Scientific).

Immunogen: A synthesized peptide derived from human CCNT1, corresponding to a region within C-terminal amino acids.

Uniprot: O60563

Description: Positive transcription elongation factor (P-TEFb) is a heterodimer composed of cyclin T proteins and CDK9. P-TEFb plays a critical role in the transition of the RNA polymerase II (RNAPII) machinery from transcription initiation to elongation . At some genes during transcription initiation, RNAPII moves approximately 50 nucleotides away from the transcription start site into the gene where it then pauses and awaits signaling for the formation of a productive transcription elongation complex (1,2). The release of this promoter proximal pausing of RNAPII is signaled by phosphorylation of the C-terminal domain (CTD) within the largest subunit of RNAPII at Ser2 of the heptapeptide repeat sequence by P-TEFb .



Western blot analysis of extracts from K562, using CCNT1 Ab. The lane on the left was treated with the antigen-specific peptide.

IMPORTANT: For western blot, incubate membrane with diluted primary Ab in 5% w/v milk , 1X TBS, 0.1% Tween@20 at 4°C with gentle shaking, overnight.

For Research Use Only. Not for use in diagnostic and therapeutic procedures. Not for resale without express authorization.