

## AR Ab

[Images\(4\)](#)

|               |                 |                       |
|---------------|-----------------|-----------------------|
| Cat.#: DF6783 | Concn.: ~1mg/ml | Mol.Wt.: 110kDa       |
| Size:         | Source: Rabbit  | Clonality: Polyclonal |

**Application:** WB 1:500-1:2000, IHC 1:50-1:200  
\*The optimal dilutions should be determined by the end user.

**Reactivity:** Human, Mouse, Rat, Monkey

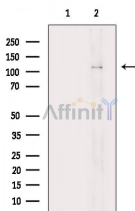
**Storage:** Rabbit IgG in phosphate buffered saline , pH 7.4, 150mM NaCl, 0.02% sodium azide and 50% glycerol. Store at -20 °C. Stable for 12 months from date of receipt.

**Purification:** The antiserum was purified by peptide affinity chromatography using SulfoLink™ Coupling Resin (Thermo Fisher Scientific).

**Immunogen:** A synthesized peptide derived from human AR, corresponding to a region within the internal amino acids.

**Uniprot:** P10275

**Description:** Androgen receptor (AR), a zinc finger transcription factor belonging to the nuclear receptor superfamily, is activated by phosphorylation and dimerization upon ligand binding . This promotes nuclear localization and binding of AR to androgen response elements in androgen target genes. AR plays a crucial role in several stages of male development and the progression of prostate cancer (2,3).



Western blot analysis of extracts from HeLa cells, using AR Ab. The lane on the left was treated with blocking peptide.

**IMPORTANT:** For western blot, incubate membrane with diluted primary Ab in 5% w/v milk , 1X TBS, 0.1% Tween@20 at 4°C with gentle shaking, overnight.

For Research Use Only. Not for use in diagnostic and therapeutic procedures. Not for resale without express authorization.