

## ALDH1A1 Ab

[References\(2\)](#) [Images\(3\)](#)

Cat.#: DF6625  
Size:

Concn.: ~1mg/ml  
Source: Rabbit

Mol.Wt.: 55kDa  
Clonality: Polyclonal

Application:

WB 1:500-1:2000, IHC 1:50-1:200

\*The optimal dilutions should be determined by the end user.

Reactivity:

Human,Mouse,Rat

Storage:

Rabbit IgG in phosphate buffered saline , pH 7.4, 150mM NaCl, 0.02% sodium azide and 50% glycerol. Store at -20 °C. Stable for 12 months from date of receipt.

Purification:

The antiserum was purified by peptide affinity chromatography using SulfoLink™ Coupling Resin (Thermo Fisher Scientific).

Immunogen:

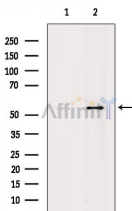
A synthesized peptide derived from human ALDH1A1, corresponding to a region within C-terminal amino acids.

Uniprot:

P00352

Description:

The aldehyde dehydrogenase family is a large group of enzymes that oxidize aldehydes formed through metabolic processes to their carboxylic acids . ALDH1A1 is a liver cytosolic isoform of acetaldehyde dehydrogenase and is involved in the major pathway of alcohol metabolism along with alcohol dehydrogenase . ALDH1A1 is also known as retinal dehydrogenase 1 and is involved in retinol metabolism, converting retinol to retinoic acid . Recent studies suggest that control of retinoid signaling through ALDH1A1 may influence hematopoietic stem cell differentiation . There has been recent interest in ALDH1 isoforms as predictive biomarkers in disease.



Western blot analysis of extracts from A549 cells(UV treatment), using ALDH1A1 Ab. The lane on the left was treated with blocking peptide.

**IMPORTANT:** For western blot, incubate membrane with diluted primary Ab in 5% w/v milk , 1X TBS, 0.1% Tween@20 at 4°C with gentle shaking, overnight.

For Research Use Only. Not for use in diagnostic and therapeutic procedures. Not for resale without express authorization.