

## Caspase 6 Ab

[Images\(2\)](#)

Cat.#: DF6616                      Concn.: ~1mg/ml                      Mol.Wt.: 22kDa  
Size:                                      Source: Rabbit                              Clonality: Polyclonal

Application:                      WB 1:500-1:2000, IHC 1:50-1:200, IF/ICC 1:100-1:500  
\*The optimal dilutions should be determined by the end user.

Reactivity:                      Human,Mouse,Rat

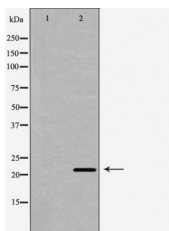
Storage:                              Rabbit IgG in phosphate buffered saline , pH 7.4, 150mM NaCl, 0.02% sodium azide and 50% glycerol. Store at -20 °C. Stable for 12 months from date of receipt.

Purification:                      The antiserum was purified by peptide affinity chromatography using SulfoLink™ Coupling Resin (Thermo Fisher Scientific).

Immunogen:                      A synthesized peptide derived from human Caspase 6, corresponding to a region within the internal amino acids.

Uniprot:                              P55212

Description:                      Caspase-6 (Mch2) is one of the major executioner caspases functioning in cellular apoptotic processes (1,2). Upon apoptotic stimulation, initiator caspases such as caspase-9 are cleaved and activated . The activated upstream caspases further process downstream executioner caspases, such as caspase-3 and caspase-6, by cleaving them into large and small subunits, thereby initiating a caspase cascade leading to apoptosis (4,5). One of the major targets for caspase-6 is the membrane associated protein lamin A . The cleavage of this protein causes cell membrane malfunction, membrane blebbing and eventual cell death.





DF6616 at 1/100 staining Rat heart tissue by IHC-P. The sample was formaldehyde fixed and a heat mediated antigen retrieval step in citrate buffer was performed. The sample was then blocked and incubated with the Ab for 1.5 hours at 22°C. An HRP conjugated goat anti-rabbit Ab was used as the secondary Ab.

**IMPORTANT:** For western blot, incubate membrane with diluted primary Ab in 5% w/v milk , 1X TBS, 0.1% Tween@20 at 4°C with gentle shaking, overnight.

For Research Use Only. Not for use in diagnostic and therapeutic procedures. Not for resale without express authorization.