

DUSP16 Ab

[Images\(2\)](#)

Cat.#: AF0522 Concn.: ~1mg/ml Mol.Wt.: 73kDa
Size: Source: Rabbit Clonality: Polyclonal

Application: WB 1:500-1:2000, IF/ICC 1:100-1:500
*The optimal dilutions should be determined by the end user.

Reactivity: Human,Mouse,Monkey

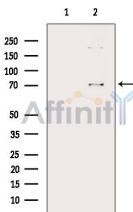
Storage: Mouse IgG1 in phosphate buffered saline (without Mg²⁺ and Ca²⁺), pH 7.4, 150mM NaCl, 0.02% sodium azide and 50% glycerol. Store at -20 °C. Stable for 12 months from date of receipt.

Purification: The antiserum was purified by peptide affinity chromatography using SulfoLink™ Coupling Resin (Thermo Fisher Scientific).

Immunogen: A synthesized peptide derived from human DUSP16, corresponding to a region within the internal amino acids.

Uniprot: Q9BY84

Description: The activation of mitogen-activated protein kinase (MAPK) cascades transduces various extracellular signals to the nucleus to induce gene expression, cell proliferation, differentiation, cell cycle arrest, and apoptosis. For full activation of MAPKs, dual-specificity kinases phosphorylate both threonine and tyrosine residues in MAPK TXY motifs. MKPs are dual-specificity phosphatases that dephosphorylate the TXY motif, thereby negatively regulating MAPK activity.[supplied by OMIM]



Western blot analysis of extracts from VERO cells(heat-shock treatment), using DUSP16 Ab. The lane on the left was treated with blocking peptide.

IMPORTANT: For western blot, incubate membrane with diluted primary Ab in 5% w/v milk , 1X TBS, 0.1% Tween@20 at 4°C with gentle shaking, overnight.

For Research Use Only. Not for use in diagnostic and therapeutic procedures. Not for resale without express authorization.