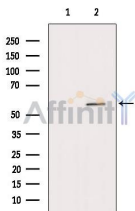


MYOC Ab

[References\(1\)](#) [Images\(2\)](#)

Cat.#: DF6483	Concn.: ~1mg/ml	Mol.Wt.: 57kDa
Size:	Source: Rabbit	Clonality: Polyclonal
Application:	WB 1:500-1:2000, IHC 1:50-1:200 *The optimal dilutions should be determined by the end user.	
Reactivity:	Human,Mouse,Rat	
Storage:	Rabbit IgG in phosphate buffered saline , pH 7.4, 150mM NaCl, 0.02% sodium azide and 50% glycerol. Store at -20 °C. Stable for 12 months from date of receipt.	
Purification:	The antiserum was purified by peptide affinity chromatography using SulfoLink™ Coupling Resin (Thermo Fisher Scientific).	
Immunogen:	A synthesized peptide derived from human MYOC, corresponding to a region within the internal amino acids.	
Uniprot:	Q99972	
Description:	Myocilin (MYOC), also known as TIGR or GLC1A, is a secreted glycoprotein of the olfactomedin family, originally identified in trabecular meshwork cells after prolonged treatment with glucocorticoids, and, independently, in the retina (PMID: 9176893; 9169133). It may participate in the obstruction of fluid outflow in the trabecular meshwork. Defects in MYOC are the cause of primary open angle glaucoma (POAG) (PMID: 21709622). MYOC has a molecular weight of 55-57 kDa, besides, a 66-kDa form, which could be a result of post-translational modifications, has also been reported in some researches (PMID: 9497363; 12150989).	



Western blot analysis of extracts from B16F10, using MYOC Ab. The lane on the left was treated with blocking peptide.

IMPORTANT: For western blot, incubate membrane with diluted primary Ab in 5% w/v milk , 1X TBS, 0.1% Tween@20 at 4°C with gentle shaking, overnight.

For Research Use Only. Not for use in diagnostic and therapeutic procedures. Not for resale without express authorization.