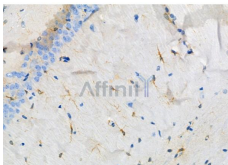


## IFNB1 Ab

[References\(3\)](#) [Images\(4\)](#)

Cat.#: DF6471	Concn.: ~1mg/ml	Mol.Wt.: 22kDa
Size:	Source: Rabbit	Clonality: Polyclonal
Application:	WB 1:500-1:2000, IHC 1:50-1:200 *The optimal dilutions should be determined by the end user.	
Reactivity:	Human,Mouse,Rat	
Storage:	Rabbit IgG in phosphate buffered saline , pH 7.4, 150mM NaCl, 0.02% sodium azide and 50% glycerol. Store at -20 °C. Stable for 12 months from date of receipt.	
Purification:	The antiserum was purified by peptide affinity chromatography using SulfoLink™ Coupling Resin (Thermo Fisher Scientific).	
Immunogen:	A synthesized peptide derived from human IFNB1, corresponding to a region within the internal amino acids.	
Uniprot:	P01574	
Description:	The genes encoding type I interferons (IFNs), which include 14 IFN- genes, one IFN-? gene, one IFN-w (also known as IFN- II1) gene, and a number of IFN-w pseudogenes, are clustered on human chromosome 9. Interferons- and -? are cytokines that are widely known to induce potent antiviral activity. IFN- and -? exert a variety of other biological effects, including antitumor and immunomodulatory activities and are increasingly used clinically to treat a range of malignancies, myelodysplasias and autoimmune diseases. IFN-w is antigenically different from human IFN- , IFN-? or IFN- , but is a component of natural mixtures of IFN species produced by virus-induced leukocytes or Burkitt's lymphoma cells.	



DF6471 at 1/100 staining Rat brain tissue by IHC-P. The sample was formaldehyde fixed and a heat mediated antigen retrieval step in citrate buffer was performed. The sample was then blocked and incubated with the primary Ab at 4°C overnight. An HRP conjugated anti-Rabbit Ab was used as the secondary Ab.

**IMPORTANT:** For western blot, incubate membrane with diluted primary Ab in 5% w/v milk , 1X TBS, 0.1% Tween@20 at 4°C with gentle shaking, overnight.

For Research Use Only. Not for use in diagnostic and therapeutic procedures. Not for resale without express authorization.