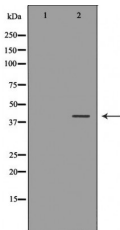


## Annexin A2 Ab

[Images\(1\)](#)

Cat.#: DF6468	Concn.: ~1mg/ml	Mol.Wt.: 39kDa
Size:	Source: Rabbit	Clonality: Polyclonal
Application:	WB 1:500-1:2000, IHC 1:50-1:200 *The optimal dilutions should be determined by the end user.	
Reactivity:	Human,Mouse,Rat	
Storage:	Rabbit IgG in phosphate buffered saline , pH 7.4, 150mM NaCl, 0.02% sodium azide and 50% glycerol. Store at -20 °C. Stable for 12 months from date of receipt.	
Purification:	The antiserum was purified by peptide affinity chromatography using SulfoLink™ Coupling Resin (Thermo Fisher Scientific).	
Immunogen:	A synthesized peptide derived from human Annexin A2, corresponding to a region within the internal amino acids.	
Uniprot:	P07355	
Description:	Annexin A2 (ANXA2), also known as lipocortin II or calpactin-1 heavy chain, is a 36 kDa member of the annexin superfamily that binds phospholipids and other proteins in a calcium-dependent manner via annexin repeats . Annexin A2 contains four such repeats through which it mediates protein-protein and protein-lipid interactions (1-4). It forms a constitutive heterotetramer with S100A10, acting as a bridge between the actin cytoskeleton, plasma membrane, and endocytotic vesicle machinery (5-7). Originally identified as a protein inhibitor of phospholipase A2, annexin A2 has subsequently been shown to interact with an array of protein and non-protein partners, including F-actin, spectrin, SNARE complexes, RNA, and virus particles (4,6,8,9).	



Western blot analysis of extracts from A2058, using ANXA2 Ab. The lane on the left was treated with the antigen-specific peptide.

**IMPORTANT:** For western blot, incubate membrane with diluted primary Ab in 5% w/v milk , 1X TBS, 0.1% Tween@20 at 4°C with gentle shaking, overnight.



**Affinity Biosciences**  
website: [www.affbiotech.com](http://www.affbiotech.com)  
order: [order@affbiotech.com](mailto:order@affbiotech.com)

---

procedures. Not for resale without express authorization.