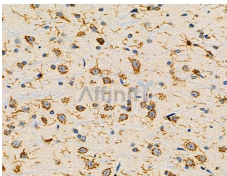


## UCP3 Ab

[References\(1\)](#) [Images\(7\)](#)

|               |   |                       |
|---------------|---|-----------------------|
| Cat.#: DF6443 | Concn.: ~1mg/ml   | Mol.Wt.: 34kDa        |
| Size:         | Source: Rabbit  | Clonality: Polyclonal |
| Application:  | WB 1:500-1:2000, IHC 1:50-1:200<br>*The optimal dilutions should be determined by the end user.   |                       |
| Reactivity:   | Human,Mouse,Rat   |                       |
| Storage:      | Rabbit IgG in phosphate buffered saline , pH 7.4, 150mM NaCl, 0.02% sodium azide and 50% glycerol. Store at -20 °C. Stable for 12 months from date of receipt.  |                       |
| Purification: | The antiserum was purified by peptide affinity chromatography using SulfoLink™ Coupling Resin (Thermo Fisher Scientific).   |                       |
| Immunogen:    | A synthesized peptide derived from human UCP3, corresponding to a region within C-terminal amino acids.   |                       |
| Uniprot:      | P55916  |                       |
| Description:  | The uncoupling protein UCP1 (formerly designated UCP) is an integral membrane protein unique to brown adipose tissue mitochondria. UCP1 forms a dimer that acts as a proton channel, which can uncouple oxidative phosphorylation by dissipating the electrochemical potential across the inner mitochondrial membrane. This process induces heat production in brown adipose tissue and is involved in regulation of body temperature and glucose metabolism. UCP2 is a structurally related protein that also uncouples mitochondrial respiration. It is more widely expressed in human and mouse tissues, including white adipose tissue and muscle, than is UCP1. UCP2 is thought to play a role in body weight regulation. |                       |



DF6443 at 1/100 staining Rat brain tissue by IHC-P. The sample was formaldehyde fixed and a heat mediated antigen retrieval step in citrate buffer was performed. The sample was then blocked and incubated with the primary Ab at 4°C overnight. An HRP conjugated anti-Rabbit Ab was used as the secondary Ab.

**IMPORTANT:** For western blot, incubate membrane with diluted primary Ab in 5% w/v milk , 1X TBS, 0.1% Tween@20 at 4°C with gentle shaking, overnight.

For Research Use Only. Not for use in diagnostic and therapeutic procedures. Not for resale without express authorization.