

## KLHL11 Ab

[Images\(1\)](#)

Cat.#: BF0252                      Concn.: ~1mg/ml                      Mol.Wt.: 80kDa  
Size:                                      Source: Mouse                      Clonality: Monoclonal

Application:                      ELISA 1:10000, WB 1:500-1:2000, IHC 1:200-1:1000, IF/ICC  
1:200-1:1000

\*The optimal dilutions should be determined by the end user.

Reactivity:                      Human

Storage:                      Mouse IgG1 in phosphate buffered saline (without Mg<sup>2+</sup> and Ca<sup>2+</sup>), pH  
7.4, 150mM NaCl, 0.02% sodium azide and 50% glycerol. Store at -20 °C.  
Stable for 12 months from date of receipt.

Purification:                      Affinity-chromatography.

Immunogen:                      Purified recombinant fragment of human KLHL11 expressed in E. Coli.

Uniprot:                      Q9NVR0

Description:                      Kelch-like protein 11, Subcellular location Secreted.

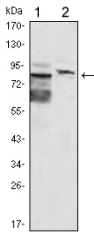


Figure 1: Western blot analysis using KLHL11 mouse mAb against HeLa (1) and MCF-7 (2) cell lysate.

**IMPORTANT:** For western blot, incubate membrane with diluted primary Ab in 5% w/v milk, 1X TBS, 0.1% Tween@20 at 4°C with gentle shaking, overnight.

For Research Use Only. Not for use in diagnostic and therapeutic procedures. Not for resale without express authorization.