

KLHL25 Ab

[Images\(1\)](#)

| | | |
|---------------|-----------------|-----------------------|
| Cat.#: BF0064 | Concn.: ~1mg/ml | Mol.Wt.: 65kDa |
| Size: | Source: Mouse | Clonality: Monoclonal |

Application: ELISA 1:10000, WB 1:500-1:2000
*The optimal dilutions should be determined by the end user.

Reactivity: Human

Storage: Mouse IgG1 in phosphate buffered saline (without Mg²⁺ and Ca²⁺), pH 7.4, 150mM NaCl, 0.02% sodium azide and 50% glycerol. Store at -20 °C. Stable for 12 months from date of receipt.

Purification: Affinity-chromatography.

Immunogen: Purified recombinant fragment of human KLHL25 expressed in E. Coli.

Uniprot: Q9H0H3

Description: KLHL25 (ectoderm-neural cortex protein 2, ENC2) is a cytoplasmic protein that contains six Kelch regions and a single BTB (POZ) domain. KLHL25 is highly homologous to another Kelch-like protein, ENC1, and it is believed to operate in a manner similar to other Kelch-domain containing proteins. Kelch-domain repeat containing proteins often act as modifiers of Actin fibers. Expressed early in embryogenesis, ENC1 helps to mediate neuronal process formation. It also appears to have a role in neural crest cell differentiation. KLHL25 likely functions as a substrate specific adapter for protein ubiquitinating complexes. KLHL25 is expressed in most tissues with highest expression in brain and liver.

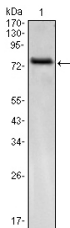


Figure 1: Western blot analysis using KLHL25 mAb against KLHL25(AA: 2-230)-hIgGFc transfected HEK293 cell.

IMPORTANT: For western blot, incubate membrane with diluted primary Ab in 5% w/v milk, 1X TBS, 0.1% Tween@20 at 4°C with gentle shaking, overnight.

For Research Use Only. Not for use in diagnostic and therapeutic procedures. Not for resale without express authorization.