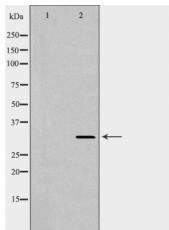


# Osteopontin Ab

[References\(2\)](#) [Images\(1\)](#)

Cat.#: DF6395	Concn.: ~1mg/ml	Mol.Wt.: 33kDa
Size:	Source: Rabbit	Clonality: Polyclonal
Application:	WB 1:500-1:2000, IHC 1:50-1:200, IF/ICC 1:100-1:500 *The optimal dilutions should be determined by the end user.	
Reactivity:	Human,Mouse,Rat	
Storage:	Rabbit IgG in phosphate buffered saline , pH 7.4, 150mM NaCl, 0.02% sodium azide and 50% glycerol. Store at -20 °C. Stable for 12 months from date of receipt.	
Purification:	The antiserum was purified by peptide affinity chromatography using SulfoLink™ Coupling Resin (Thermo Fisher Scientific).	
Immunogen:	A synthesized peptide derived from human Osteopontin, corresponding to a region within C-terminal amino acids.	
Uniprot:	P10451	
Description:	Osteopontin (OPN), also designated bone sialoprotein 1, urinary stone protein, spp-1, Eta-1, nephropontin and uropontin, is an extracellular matrix cell adhesion phosphoglycoprotein. OPN is deposited into unmineralized matrix prior to calcification leading to localization at various tissue interfaces including cement lines, lamina limitans and between collagen fibrils of fully matured hard tissues. While OPN is a major product of osteoblasts, it is also synthesized by brain and kidney cells. OPN isolated from or secreted by various tissues ranges in molecular weight due to posttranslational modifications. OPN functions as a substrate for transglutaminase and is involved in cell adhesion, chemoattraction and immunomodulation.	



Western blot analysis of extracts from HeLa, using SPP1 Ab. The lane on the left was treated with the antigen-specific peptide.

**IMPORTANT:** For western blot, incubate membrane with diluted primary Ab in 5% w/v milk , 1X TBS, 0.1% Tween@20 at 4°C with gentle shaking, overnight.



**Affinity Biosciences**  
website: [www.affbiotech.com](http://www.affbiotech.com)  
order: [order@affbiotech.com](mailto:order@affbiotech.com)

---

procedures. Not for resale without express authorization.