

# MAOA Ab

[Images\(1\)](#)

Cat.#: DF6393	Concn.: ~1mg/ml	Mol.Wt.: 58kDa
Size:	Source: Rabbit	Clonality: Polyclonal

**Application:** WB 1:500-1:2000, IHC 1:50-1:200  
 \*The optimal dilutions should be determined by the end user.

**Reactivity:** Human,Mouse,Rat

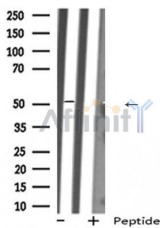
**Storage:** Rabbit IgG in phosphate buffered saline , pH 7.4, 150mM NaCl, 0.02% sodium azide and 50% glycerol. Store at -20 °C. Stable for 12 months from date of receipt.

**Purification:** The antiserum was purified by peptide affinity chromatography using SulfoLink™ Coupling Resin (Thermo Fisher Scientific).

**Immunogen:** A synthesized peptide derived from human MAOA, corresponding to a region within the internal amino acids.

**Uniprot:** P21397

**Description:** Monoamine oxidase (MAO) is an enzyme of the mitochondrial outer membrane and catalyzes the oxidative deamination of biogenic amines throughout the body . MAO is critical in the neuronal metabolism of catecholamine and indolamine transmitters . Cultured skin fibroblasts show both MAO-A and MAO-B and both MAOs differ in molecular structure . MAO-A, the primary type in fibroblasts, preferentially degrades serotonin and norepinephrine . Only MAO-B is present in platelets and only MAO-A is present in trophoblasts . MAO-B, the primary type found not only in platelets but also in the brain of man and other primates, preferentially degrades phenylethylamine and benzylamine .



Western blot analysis of extracts from Mouse lung lysates, using MAOA Ab.

**IMPORTANT:** For western blot, incubate membrane with diluted primary Ab in 5% w/v milk , 1X TBS, 0.1% Tween@20 at 4°C with gentle shaking, overnight.

For Research Use Only. Not for use in diagnostic and therapeutic procedures. Not for resale without express authorization.