

CDC25C Ab

[Images\(1\)](#)

Cat.#: BF0380	Concn.: ~1mg/ml	Mol.Wt.: 58kDa
Size:	Source: Mouse	Clonality: Monoclonal

Application: ELISA 1:10000, WB 1:500-1:2000, IHC 1:200-1:1000
*The optimal dilutions should be determined by the end user.

Reactivity: Human, Mouse

Storage: Mouse IgG1 in phosphate buffered saline (without Mg²⁺ and Ca²⁺), pH 7.4, 150mM NaCl, 0.02% sodium azide and 50% glycerol. Store at -20 °C. Stable for 12 months from date of receipt.

Purification: Affinity-chromatography.

Immunogen: Purified recombinant fragment of human CDC25C expressed in E. Coli.

Uniprot: P30307

Description: a member of the MPI phosphatase family. Activates the cyclin dependent kinase CDC2 by removing two phosphate groups and it is required for entry into mitosis. Shuttles between the nucleus and the cytoplasm due to nuclear localization and nuclear export signals. The protein is nuclear in the M and G1 phases of the cell cycle and moves to the cytoplasm during S and G2. CDC25B has oncogenic properties, although its role in tumor formation has not been determined. At least four transcript variants for this gene exist. Three splice variant isoforms have been described.

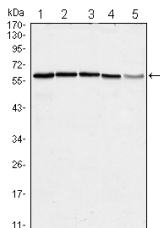


Figure 1: Western blot analysis using anti-CDC25C mAb against Hela (1), K562 (2), PC-3 (3), HEK293 (4) and Raw264.7 (5) cell lysate.

IMPORTANT: For western blot, incubate membrane with diluted primary Ab in 5% w/v milk, 1X TBS, 0.1% Tween@20 at 4°C with gentle shaking, overnight.

For Research Use Only. Not for use in diagnostic and therapeutic procedures. Not for resale without express authorization.