

STIP1 Ab

[References\(1\)](#) [Images\(1\)](#)

Cat.#: DF6351 Concn.: ~1mg/ml Mol.Wt.: 63kDa
Size: Source: Rabbit Clonality: Polyclonal

Application: WB 1:500-1:2000, IHC 1:50-1:200
*The optimal dilutions should be determined by the end user.

Reactivity: Human,Mouse,Rat

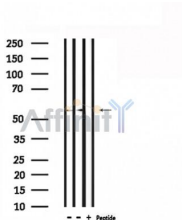
Storage: Rabbit IgG in phosphate buffered saline , pH 7.4, 150mM NaCl, 0.02% sodium azide and 50% glycerol. Store at -20 °C. Stable for 12 months from date of receipt.

Purification: The antiserum was purified by peptide affinity chromatography using SulfoLink™ Coupling Resin (Thermo Fisher Scientific).

Immunogen: A synthesized peptide derived from human STIP1, corresponding to a region within N-terminal amino acids.

Uniprot: P31948

Description: HOP, also known as stress-induced phospho protein 1 (STIP), is a co-chaperone to the major heat shock proteins, Hsp70 and Hsp90, and appears in early receptor complexes (1,2). Through mutual binding to both Hsp70 and Hsp90, Hop functions as an adaptor that can integrate Hsp70 and Hsp90 interactions (3,4). HOP is an abundant and highly conserved protein which is composed of three tetratricopeptide repeat (TPR) domains (TPR1, TPR2a and TPR2b) and two DP repeat domains (DP1 and DP2), whose function has not been fully resolved .



Western blot analysis of extracts from mouse brain and HepG2, using STIP1 Ab.

IMPORTANT: For western blot, incubate membrane with diluted primary Ab in 5% w/v milk , 1X TBS, 0.1% Tween@20 at 4°C with gentle shaking, overnight.

For Research Use Only. Not for use in diagnostic and therapeutic procedures. Not for resale without express authorization.