

## ETS1 Ab

[Images\(2\)](#)

Cat.#: BF0600	Concn.: ~1mg/ml	Mol.Wt.: 50.4kDa
Size:	Source: Mouse	Clonality: Monoclonal
Application:	ELISA 1:10000, WB 1:500-1:2000, IHC 1:200-1:1000 *The optimal dilutions should be determined by the end user.	
Reactivity:	Human	
Storage:	Mouse IgG1 in phosphate buffered saline (without Mg <sup>2+</sup> and Ca <sup>2+</sup> ), pH 7.4, 150mM NaCl, 0.02% sodium azide and 50% glycerol. Store at -20 °C. Stable for 12 months from date of receipt.	
Purification:	Affinity-chromatography.	
Immunogen:	Purified recombinant fragment of human ETS1 expressed in E. Coli.	
Uniprot:	P14921	
Description:	ETS transcriptions factors, such as ETS1, regulate numerous genes and are involved in stem cell development, cell senescence and death, and tumorigenesis. The conserved ETS domain within these proteins is a winged helix-turn-helix DNA-binding domain that recognizes the core consensus DNA sequence GGAA/T of target genes (Dwyer et al., 2007 [PubMed 17986575]).[supplied by OMIM]	

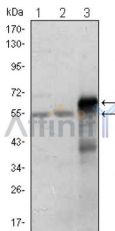


Figure 1: Western blot analysis using ETS1 mouse mAb against Jurkat (1), HepG2 (2) and ETS1-hlgGfc transfected HEK293 (3) cell lysate.

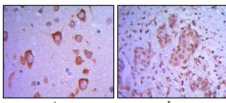


Figure 2: Immunohistochemical analysis of paraffin-embedded human brain tissue (A) and breast tumor (B) using ETS1 mouse mAb.

**IMPORTANT:** For western blot, incubate membrane with diluted primary Ab in 5% w/v milk , 1X TBS, 0.1% Tween@20 at 4°C with gentle shaking, overnight.



**Affinity Biosciences**

website:[www.affbiotech.com](http://www.affbiotech.com)

order:[order@affbiotech.com](mailto:order@affbiotech.com)

---

For Research Use Only. Not for use in diagnostic and therapeutic procedures. Not for resale without express authorization.