

## PDGFB Ab

[Images\(2\)](#)

Cat.#: DF6328                      Concn.: ~1mg/ml                      Mol.Wt.: 27kDa  
Size:                                      Source: Rabbit                              Clonality: Polyclonal

Application:                      WB 1:500-1:2000, IHC 1:50-1:200, IF/ICC 1:100-1:500  
\*The optimal dilutions should be determined by the end user.

Reactivity:                      Human,Mouse,Rat

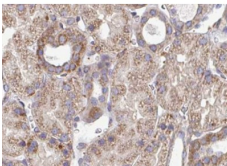
Storage:                              Rabbit IgG in phosphate buffered saline , pH 7.4, 150mM NaCl, 0.02% sodium azide and 50% glycerol. Store at -20 °C. Stable for 12 months from date of receipt.

Purification:                      The antiserum was purified by peptide affinity chromatography using SulfoLink™ Coupling Resin (Thermo Fisher Scientific).

Immunogen:                      A synthesized peptide derived from human PDGFB, corresponding to a region within N-terminal amino acids.

Uniprot:                              P01127

Description:                      PDGF-BB is a cystine-linked homodimer PDGF family member with key roles in development, cell proliferation, cell survival, and angiogenesis (1,2). PDGF-BB is expressed by vascular endothelium, megakaryocytes and Leydig cells . PDGF-BB targets pericytes, fibroblasts, monocytes and other cell types (1-3). PDGF induces fibroblast growth and migration and is a chemoattractant for monocytes and granulocytes. Precursor PDGF-BB is cleaved intracellularly to generate a form that contains a carboxy-terminal stretch that serves to retain PDGF-BB in the extracellular matrix. In a second cleavage event, the carboxy-terminal stretch is removed extracellularly to generate mature PDGF-BB (1,2). PDGF-BB binds to PDGFR? and induces receptor dimerization.



DF6328 at 1/100 staining human kidney tissue sections by IHC-P. The tissue was formaldehyde fixed and a heat mediated antigen retrieval step in citrate buffer was performed. The tissue was then blocked and incubated with the Ab for 1.5 hours at 22°C. An HRP conjugated goat anti-rabbit Ab was used as the secondary Ab.

**IMPORTANT:** For western blot, incubate membrane with diluted primary Ab in 5% w/v milk , 1X TBS, 0.1% Tween@20 at 4°C with gentle shaking, overnight.



**Affinity Biosciences**  
website: [www.affbiotech.com](http://www.affbiotech.com)  
order: [order@affbiotech.com](mailto:order@affbiotech.com)

---

procedures. Not for resale without express authorization.