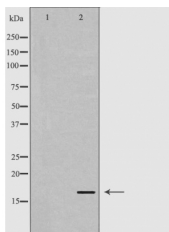


Calmodulin1/2/3 Ab

[Images\(1\)](#)

Cat.#: DF6295	Concn.: ~1mg/ml	Mol.Wt.: 17kDa
Size:	Source: Rabbit	Clonality: Polyclonal
Application:	WB 1:500-1:2000, IHC 1:50-1:200, IF/ICC 1:100-1:500 *The optimal dilutions should be determined by the end user.	
Reactivity:	Human,Mouse,Rat	
Storage:	Rabbit IgG in phosphate buffered saline , pH 7.4, 150mM NaCl, 0.02% sodium azide and 50% glycerol. Store at -20 °C. Stable for 12 months from date of receipt.	
Purification:	The antiserum was purified by peptide affinity chromatography using SulfoLink™ Coupling Resin (Thermo Fisher Scientific).	
Immunogen:	A synthesized peptide derived from human Calmodulin1/2/3, corresponding to a region within the internal amino acids.	
Uniprot:	P0DP23/P0DP24/P0DP25	
Description:	Calmodulin is a ubiquitously expressed small protein mediating many cellular effects such as short-term and long-term memory, nerve growth, inflammation, apoptosis, muscle contraction and intracellular movement . Upon binding of four Ca ²⁺ ions, calmodulin undergoes conformational changes, allowing this complex to bind to and activate many enzymes including protein kinases, protein phosphatases, ion channels, Ca ²⁺ pumps, nitric oxide synthase, inositol triphosphate kinase, and cyclic nucleotide phosphodiesterase (2,3). Since calmodulin binds Ca ²⁺ in a cooperative fashion, small changes in cytosolic Ca ²⁺ levels lead to large changes in the level of active calmodulin and its target proteins .	



Western blot analysis of mouse brain lysates using CALM3 Ab. The lane on the left was treated with the antigen-specific peptide.

IMPORTANT: For western blot, incubate membrane with diluted primary Ab in 5% w/v milk , 1X TBS, 0.1% Tween@20 at 4°C with gentle shaking, overnight.

For Research Use Only. Not for use in diagnostic and therapeutic procedures. Not for resale without express authorization.