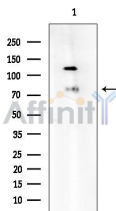


TCF4 Ab

[References\(2\)](#) [Images\(3\)](#)

Cat.#: DF6275	Concn.: ~1mg/ml	Mol.Wt.: 71kDa
Size:	Source: Rabbit	Clonality: Polyclonal
Application:	WB 1:500-1:2000, IHC 1:50-1:200 *The optimal dilutions should be determined by the end user.	
Reactivity:	Human,Mouse,Rat	
Storage:	Rabbit IgG in phosphate buffered saline , pH 7.4, 150mM NaCl, 0.02% sodium azide and 50% glycerol. Store at -20 °C. Stable for 12 months from date of receipt.	
Purification:	The antiserum was purified by peptide affinity chromatography using SulfoLink™ Coupling Resin (Thermo Fisher Scientific).	
Immunogen:	A synthesized peptide derived from human TCF4, corresponding to a region within N-terminal amino acids.	
Uniprot:	P15884	
Description:	LEF1 and TCF are members of the high mobility group (HMG) DNA binding protein family of transcription factors that consists of the following: Lymphoid Enhancer Factor 1 (LEF1), T Cell Factor 1 (TCF1), TCF3, and TCF4 . LEF1 and TCF1 were originally identified as important factors regulating early lymphoid development and act downstream in Wnt signaling. LEF1 and TCF bind to Wnt response elements to provide docking sites for β -catenin, which translocates to the nucleus to promote the transcription of target genes upon activation of Wnt signaling . LEF1 and TCF are dynamically expressed during development and aberrant activation of the Wnt signaling pathway is involved in many types of cancers including colon cancer (4,5).	



Western blot analysis of extracts from COLO205 cells(heat-shock treatment), using TCF4 Ab at 1/1000 dilution.
Observed bands:80kD.

IMPORTANT: For western blot, incubate membrane with diluted primary Ab in 5% w/v milk , 1X TBS, 0.1% Tween@20 at 4°C with gentle shaking, overnight.



Affinity Biosciences
website: www.affbiotech.com
order: order@affbiotech.com

procedures. Not for resale without express authorization.