

# PHPT1 Ab

[Images\(1\)](#)

Cat.#: DF6262	Concn.: ~1mg/ml	Mol.Wt.: 14kDa
Size:	Source: Rabbit	Clonality: Polyclonal

**Application:** WB 1:500-1:2000, IHC 1:50-1:200  
 \*The optimal dilutions should be determined by the end user.

**Reactivity:** Human,Mouse,Rat

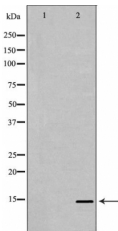
**Storage:** Rabbit IgG in phosphate buffered saline , pH 7.4, 150mM NaCl, 0.02% sodium azide and 50% glycerol. Store at -20 °C. Stable for 12 months from date of receipt.

**Purification:** The antiserum was purified by peptide affinity chromatography using SulfoLink™ Coupling Resin (Thermo Fisher Scientific).

**Immunogen:** A synthesized peptide derived from human PHPT1, corresponding to a region within the internal amino acids.

**Uniprot:** Q9NRX4

**Description:** PHPT1 (Phosphohistidine phosphatase 1), also known as 14 kDaphosphohistidine phosphatase, is a 125 amino acid enzyme belonging to the Janus protein family. Existing as a monomer in the cytoplasm, PHPT1 is an EDTA-insensitive phosphohistidine phosphatase. First identified in human adrenal gland, PHPT1 is highly expressed in skeletal muscle and heart, with lower expression in liver, pancreas and kidney. Overexpression of PHPT1 leads to specific phosphohistidine phosphatase activity towards phosphopeptide I, with no activity detected towards phosphotyrosine, phosphothreonine and phosphoserine peptides. PHPT1 is highly conserved among species, suggesting that it serves an essential functional role.



Western blot analysis of A549 whole cell lysates, using PHPT1 Ab. The lane on the left was treated with the antigen-specific peptide.

**IMPORTANT:** For western blot, incubate membrane with diluted primary Ab in 5% w/v milk , 1X TBS, 0.1% Tween@20 at 4°C with gentle shaking, overnight.