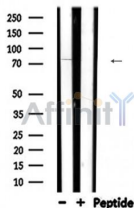


## ARHGEF7 Ab

[Images\(1\)](#)

Cat.#: DF6247	Concn.: ~1mg/ml	Mol.Wt.: 90kDa
Size:	Source: Rabbit	Clonality: Polyclonal
Application:	WB 1:500-1:2000, IHC 1:50-1:200 *The optimal dilutions should be determined by the end user.	
Reactivity:	Human,Mouse,Rat	
Storage:	Rabbit IgG in phosphate buffered saline , pH 7.4, 150mM NaCl, 0.02% sodium azide and 50% glycerol. Store at -20 °C. Stable for 12 months from date of receipt.	
Purification:	The antiserum was purified by peptide affinity chromatography using SulfoLink™ Coupling Resin (Thermo Fisher Scientific).	
Immunogen:	A synthesized peptide derived from human ARHGEF7, corresponding to a region within the internal amino acids.	
Uniprot:	Q14155	
Description:	Cool/Pix proteins comprise a family of guanine nucleotide exchange factors (GEFs) localized to focal adhesions. The family consists of two isoforms, cool2/?pix and cool1/?Pix, the latter having two splice variants that vary in their carboxy termini . Cool1/?Pix, like other GEFs, has a DH (Dbl homology) domain, which allows binding of small GTPases and GDP/GTP exchange, and a PH (Pleckstrin homology) domain, which is important in regulating subcellular localization. Cool1/?Pix also has an SH3 domain, which binds to the PAK kinase, a downstream effector of cdc42 and Rac (3,4). Phosphorylation of cool1/?Pix by PAK2 downstream of MAPK signaling alters the localization of a complex containing PAK2 and cool-1/?Pix, regulating formation of growth cones in response to growth factors .	



Western blot analysis of ARHGEF7 expression in Rat muscle lysates

**IMPORTANT:** For western blot, incubate membrane with diluted primary Ab in 5% w/v milk , 1X TBS, 0.1% Tween@20 at 4°C with gentle shaking, overnight.



**Affinity Biosciences**

website:[www.affbiotech.com](http://www.affbiotech.com)

order:[order@affbiotech.com](mailto:order@affbiotech.com)

---

For Research Use Only. Not for use in diagnostic and therapeutic procedures. Not for resale without express authorization.