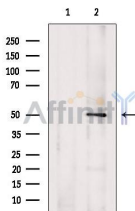


TYMP Ab

[Images\(2\)](#)

Cat.#: DF6237	Concn.: ~1mg/ml	Mol.Wt.: 50kDa
Size:	Source: Rabbit	Clonality: Polyclonal
Application:	WB 1:500-1:2000, IHC 1:50-1:200 *The optimal dilutions should be determined by the end user.	
Reactivity:	Human,Mouse,Rat	
Storage:	Rabbit IgG in phosphate buffered saline , pH 7.4, 150mM NaCl, 0.02% sodium azide and 50% glycerol. Store at -20 °C. Stable for 12 months from date of receipt.	
Purification:	The antiserum was purified by peptide affinity chromatography using SulfoLink™ Coupling Resin (Thermo Fisher Scientific).	
Immunogen:	A synthesized peptide derived from human TYMP, corresponding to a region within N-terminal amino acids.	
Uniprot:	P19971	
Description:	Thymidine phosphorylase (TP) is a platelet-derived endothelial cell growth factor (PD-ECGF) that catalyzes the formation of thymine and 2-deoxy-D-ribose-1-phosphate from thymidine and orthophosphate . This intracellular enzyme is capable of both promoting angiogenesis and inhibiting apoptosis. Thymidine phosphorylase catalytic activity is required for its angiogenic function (2,3). Increased expression of TP/PD-ECGF is seen in a wide variety of different solid tumors and inflammatory diseases and is often associated with poor prognosis (4,5). Alternatively, TP can activate fluorouracil derivative (DFUR) prodrugs and increase the antitumor activity of the related treatment (1,5).	



Western blot analysis of extracts from EC304 cells, using TYMP Ab. The lane on the left was treated with blocking peptide.

IMPORTANT: For western blot, incubate membrane with diluted primary Ab in 5% w/v milk , 1X TBS, 0.1% Tween@20 at 4°C with gentle shaking, overnight.