

## MAGED1 Ab

[Images\(2\)](#)

Cat.#: DF6235	Concn.: ~1mg/ml	Mol.Wt.: 86kDa
Size:	Source: Rabbit	Clonality: Polyclonal

**Application:** WB 1:500-1:2000, IHC 1:50-1:200  
\*The optimal dilutions should be determined by the end user.

**Reactivity:** Human,Mouse,Rat

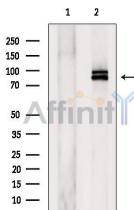
**Storage:** Rabbit IgG in phosphate buffered saline , pH 7.4, 150mM NaCl, 0.02% sodium azide and 50% glycerol. Store at -20 °C. Stable for 12 months from date of receipt.

**Purification:** The antiserum was purified by peptide affinity chromatography using SulfoLink™ Coupling Resin (Thermo Fisher Scientific).

**Immunogen:** A synthesized peptide derived from human MAGED1, corresponding to a region within the internal amino acids.

**Uniprot:** Q9Y5V3

**Description:** MAGE-D1, also known as NRAGE or Dlxin-1, is a member of the MAGE family of proteins. Identified as a p75 neurotrophin receptor intracellular binding protein, MAGE-D1 induces developmental apoptosis of motoneurons, and is required for p75NTR-dependent apoptosis in sympathetic neurons. It is suggested that MAGE-D1 can suppress the motility and adhesion response of tumor cells. By forming a heterocomplex with Dlx/Msx family homeodomain proteins and Necdin, MAGE-D1 modulates the function of Dlx/Msx homeodomain during terminal differentiation and maturation of neurons. MAGE-D1 is also involved in the phosphorylation of IKK-alpha/beta, and subsequent transcriptional activation of the p65 subunit of NF-kappaB, via the XIAP-Tak1-Tab1 complex. (20100315, 19639218, 17453828, 15272023) G.



Western blot analysis of extracts from Myeloma cells, using MAGED1 Ab. The lane on the left was treated with blocking peptide.

**IMPORTANT:** For western blot, incubate membrane with diluted primary Ab in 5% w/v milk , 1X TBS, 0.1% Tween@20 at 4°C with gentle shaking, overnight.



**Affinity Biosciences**

website:[www.affbiotech.com](http://www.affbiotech.com)

order:[order@affbiotech.com](mailto:order@affbiotech.com)

---

For Research Use Only. Not for use in diagnostic and therapeutic procedures. Not for resale without express authorization.