

## PPIA Ab

[Images\(1\)](#)

Cat.#: DF6175	Concn.: ~1mg/ml	Mol.Wt.: 18kDa
Size:	Source: Rabbit	Clonality: Polyclonal

**Application:** WB 1:500-1:2000, IHC 1:50-1:200  
 \*The optimal dilutions should be determined by the end user.

**Reactivity:** Human,Mouse,Rat,Monkey

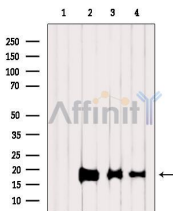
**Storage:** Rabbit IgG in phosphate buffered saline , pH 7.4, 150mM NaCl, 0.02% sodium azide and 50% glycerol. Store at -20 °C. Stable for 12 months from date of receipt.

**Purification:** The antiserum was purified by peptide affinity chromatography using SulfoLink™ Coupling Resin (Thermo Fisher Scientific).

**Immunogen:** A synthesized peptide derived from human PPIA, corresponding to a region within C-terminal amino acids.

**Uniprot:** P62937

**Description:** Cyclophilins are a highly conserved family of peptidylprolylcis-trans-isomerases (PPIA) that are targets of the immunosuppressant drug cyclosporin A (CsA) (1,2). The complex of cyclophilin and CsA can bind to and inhibit calcineurin which leads to inhibition of the transcription factor NFAT and decreased production of cytokines (3,4). As isomerases, cyclophilins have been proposed to aid in protein folding. Cyclophilin A can bind to the p55 Gag protein of HIV and appears necessary for HIV infection (5,6). There is also some evidence that cyclophilins have nuclease activity and play a role in apoptosis .



Western blot analysis of extracts from various samples, using PPIA Ab.  
 Lane 1: Myeloma cells, treated with blocking peptide;  
 Lane 2: Myeloma cells;  
 Lane 3: B16F10;  
 Lane 4: VERO.

**IMPORTANT:** For western blot, incubate membrane with diluted primary Ab in 5% w/v milk , 1X TBS, 0.1% Tween@20 at 4°C with gentle shaking, overnight.

For Research Use Only. Not for use in diagnostic and therapeutic procedures. Not for resale without express authorization.