

TGM2 Ab

[Images\(1\)](#)

Cat.#: DF6163	Concn.: ~1mg/ml	Mol.Wt.: 77kDa
Size:	Source: Rabbit	Clonality: Polyclonal

Application: WB 1:500-1:2000, IHC 1:50-1:200, IF/ICC 1:100-1:500
*The optimal dilutions should be determined by the end user.

Reactivity: Human, Mouse, Rat

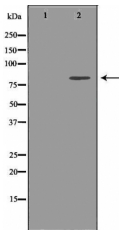
Storage: Rabbit IgG in phosphate buffered saline , pH 7.4, 150mM NaCl, 0.02% sodium azide and 50% glycerol. Store at -20 °C. Stable for 12 months from date of receipt.

Purification: The antiserum was purified by peptide affinity chromatography using SulfoLink™ Coupling Resin (Thermo Fisher Scientific).

Immunogen: A synthesized peptide derived from human TGM2, corresponding to a region within N-terminal amino acids.

Uniprot: P21980

Description: Transglutaminase 2 (TGM2) is a calcium-dependent enzyme that cross-links both cytosolic and extracellular matrix proteins by catalyzing the formation of bonds between lysine and glutamine residues . This bifunctional enzyme also has intrinsic GTPase activity, and it has been suggested that regulation of the transamidase activity might be regulated through a G-protein coupled receptor-signaling pathway . In cross-linking peptides, TGM2 helps to regulate cytoskeletal structure, cell migration, apoptosis and cell-matrix adhesion. In addition, the enzyme plays an important role in wound healing and the immune response . TGM2 has exhibited kinase activity in vitro, with insulin-like growth factor-binding protein-3 (IGFBP-3) as one possible substrate .



Western blot analysis of HeLa using TGM2 Ab. The lane on the left was treated with the antigen-specific peptide.

IMPORTANT: For western blot, incubate membrane with diluted primary Ab in 5% w/v milk , 1X TBS, 0.1% Tween@20 at 4°C with gentle shaking, overnight.



Affinity Biosciences
website: www.affbiotech.com
order: order@affbiotech.com

procedures. Not for resale without express authorization.