

STEA3 Ab

[Images\(1\)](#)

Cat.#: DF6122	Concn.: ~1mg/ml	Mol.Wt.: 55kDa
Size:	Source: Rabbit	Clonality: Polyclonal

Application: WB 1:500-1:2000, IHC 1:50-1:200, IF/ICC 1:100-1:500
 *The optimal dilutions should be determined by the end user.

Reactivity: Human,Mouse,Rat

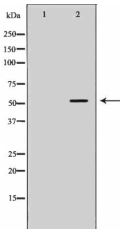
Storage: Rabbit IgG in phosphate buffered saline , pH 7.4, 150mM NaCl, 0.02% sodium azide and 50% glycerol. Store at -20 °C. Stable for 12 months from date of receipt.

Purification: The antiserum was purified by peptide affinity chromatography using SulfoLink™ Coupling Resin (Thermo Fisher Scientific).

Immunogen: A synthesized peptide derived from human STEA3, corresponding to a region within N-terminal amino acids.

Uniprot: Q658P3

Description: Caspases modulate apoptosis in various ways. Specifically, Caspase-3, a death protease, is instrumental in cleaving cellular proteins, dismantling the cell and forming apoptotic bodies. pHyde has a potential role as a tumor suppressor by inducing caspase-3-mediated apoptosis and stimulating p53 expression. A dose-dependent increase in caspase-3 activity is observed in transduced pHyde DU145 cells. Furthermore, caspase-3 may be necessary for pHyde-mediated apoptosis. The pHyde gene may upregulate the apoptosis pathway and thus have a potential application in cancer gene therapy. Recombinant pHyde inhibits the growth of human prostate cancer cell lines DU145 and LNCaP in vitro. DU145 tumors may be reduced significantly in vivo when nude mice are injected with recombinant pHyde.



Western blot analysis of Mouse liver tissue lysates, using STEAP3 Ab. The lane on the left was treated with the antigen-specific peptide.

IMPORTANT: For western blot, incubate membrane with diluted primary Ab in 5% w/v milk , 1X TBS, 0.1% Tween@20 at 4°C with gentle shaking, overnight.



Affinity Biosciences
website: www.affbiotech.com
order: order@affbiotech.com

procedures. Not for resale without express authorization.