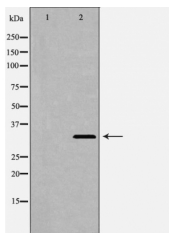


## SOX2 Ab

[Images\(1\)](#)

Cat.#: DF6109	Concn.: ~1mg/ml	Mol.Wt.: 34kDa
Size:	Source: Rabbit	Clonality: Polyclonal
Application:	WB 1:500-1:2000, IHC 1:50-1:200 *The optimal dilutions should be determined by the end user.	
Reactivity:	Human,Mouse,Rat	
Storage:	Rabbit IgG in phosphate buffered saline , pH 7.4, 150mM NaCl, 0.02% sodium azide and 50% glycerol. Store at -20 °C. Stable for 12 months from date of receipt.	
Purification:	The antiserum was purified by peptide affinity chromatography using SulfoLink™ Coupling Resin (Thermo Fisher Scientific).	
Immunogen:	A synthesized peptide derived from human SOX2, corresponding to a region within the internal amino acids.	
Uniprot:	P48431	
Description:	Embryonic stem cells are derived from the inner cell mass of the blastocyst and are unique in their pluripotent capacity and potential for self-renewal. Sox2 is one of a set of transcription factors that are crucial for the maintenance of pluripotency . Sox2, Oct-4, and Nanog cooperate in this network (1-3), and siRNA knockdown of either Sox2 or Oct-4 results in loss of pluripotency (4,5). Chromatin immunoprecipitation experiments have shown that Sox2 and Oct-4 bind to thousands of gene regulatory sites, highlighting the importance of these transcription factors in early embryonic development (6,7). It has recently been shown that Sox2 is amplified in lung and esophageal squamous cell tumors .	



Western blot analysis of human brain lysates using SOX2 Ab. The lane on the left was treated with the antigen-specific peptide.

**IMPORTANT:** For western blot, incubate membrane with diluted primary Ab in 5% w/v milk , 1X TBS, 0.1% Tween@20 at 4°C with gentle shaking, overnight.

For Research Use Only. Not for use in diagnostic and therapeutic procedures. Not for resale without express authorization.