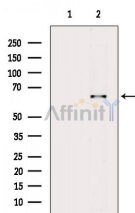


Estrogen Receptor alpha Ab

[References\(1\)](#) [Images\(4\)](#)

Cat.#: DF6094	Concn.: ~1mg/ml	Mol.Wt.: 66kDa
Size:	Source: Rabbit	Clonality: Polyclonal
Application:	WB 1:500-1:2000, IF/ICC 1:100-1:500 *The optimal dilutions should be determined by the end user.	
Reactivity:	Human,Mouse,Rat	
Storage:	Rabbit IgG in phosphate buffered saline , pH 7.4, 150mM NaCl, 0.02% sodium azide and 50% glycerol. Store at -20 °C. Stable for 12 months from date of receipt.	
Purification:	The antiserum was purified by peptide affinity chromatography using SulfoLink™ Coupling Resin (Thermo Fisher Scientific).	
Immunogen:	A synthesized peptide derived from human Estrogen Receptor alpha, corresponding to a region within the internal amino acids.	
Uniprot:	P03372	
Description:	Estrogen receptor ? (ER?), a member of the steroid receptor superfamily, contains highly conserved DNA binding (DBD) and ligand binding domains (LBD) . Through its estrogen-independent and estrogen-dependent activation domains (AF-1 and AF-2, respectively), ER? regulates transcription by recruiting coactivator proteins and interacting with general transcriptional machinery . Phosphorylation provides an important mechanism to regulate ER? activity (3,4). ER? is phosphorylated on multiple sites . Ser104, 106, 118 and 167 are located in the amino-terminal transcription activation function domain AF-1, and phosphorylation of these serines plays an important role in regulating ER? activity. Ser118 may be the substrate of the transcription regulatory kinase CDK7 .	



Western blot analysis of extracts from HepG2 cells, using Estrogen Receptor alpha Ab. The lane on the left was treated with blocking peptide.

IMPORTANT: For western blot, incubate membrane with diluted primary Ab in 5% w/v milk , 1X TBS, 0.1% Tween@20 at 4°C with gentle shaking, overnight.



Affinity Biosciences
website: www.affbiotech.com
order: order@affbiotech.com

procedures. Not for resale without express authorization.