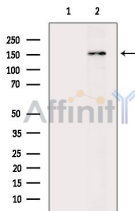


ASK1 Ab

[Images\(3\)](#)

Cat.#: DF6084	Concn.: ~1mg/ml	Mol.Wt.: 155kDa
Size:	Source: Rabbit	Clonality: Polyclonal
Application:	WB 1:500-1:2000, IF/ICC 1:100-1:500 *The optimal dilutions should be determined by the end user.	
Reactivity:	Human,Mouse,Rat	
Storage:	Rabbit IgG in phosphate buffered saline , pH 7.4, 150mM NaCl, 0.02% sodium azide and 50% glycerol. Store at -20 °C. Stable for 12 months from date of receipt.	
Purification:	The antiserum was purified by peptide affinity chromatography using SulfoLink™ Coupling Resin (Thermo Fisher Scientific).	
Immunogen:	A synthesized peptide derived from human ASK1, corresponding to a region within the internal amino acids.	
Uniprot:	Q99683	
Description:	Apoptosis signal-regulating kinase 1 (ASK1), a MAP kinase kinase kinase, plays essential roles in stress-induced apoptosis (1,2). ASK1 is activated in response to a variety of stress-related stimuli through distinct mechanisms and activates MKK4 and MKK3, which in turn activate JNK and p38 . Overexpression of ASK1 activates JNK and p38 and induces apoptosis in several cell types through signals involving the mitochondrial cell death pathway. Embryonic fibroblasts or primary neurons derived from ASK1-/- mice are resistant to stress-induced JNK and p38 activation and cell death (4,5). Phosphorylation at Ser967 is essential for ASK1 association with 14-3-3 protein and suppression of cell death .	



Western blot analysis of extracts from Rat brain, using ASK1 Ab. The lane on the left was treated with blocking peptide.

IMPORTANT: For western blot, incubate membrane with diluted primary Ab in 5% w/v milk , 1X TBS, 0.1% Tween@20 at 4°C with gentle shaking, overnight.

For Research Use Only. Not for use in diagnostic and therapeutic procedures. Not for resale without express authorization.