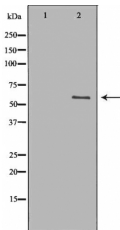


PKM2 Ab

[Images\(1\)](#)

Cat.#: DF6071	Concn.: ~1mg/ml	Mol.Wt.: 58kDa
Size:	Source: Rabbit	Clonality: Polyclonal
Application:	WB 1:500-1:2000, IHC 1:50-1:200 *The optimal dilutions should be determined by the end user.	
Reactivity:	Human,Mouse,Rat	
Storage:	Rabbit IgG in phosphate buffered saline , pH 7.4, 150mM NaCl, 0.02% sodium azide and 50% glycerol. Store at -20 °C. Stable for 12 months from date of receipt.	
Purification:	The antiserum was purified by peptide affinity chromatography using SulfoLink™ Coupling Resin (Thermo Fisher Scientific).	
Immunogen:	A synthesized peptide derived from human PKM2, corresponding to a region within the internal amino acids.	
Uniprot:	P14618	
Description:	<p>Pyruvate kinase, a glycolytic enzyme, catalyses the conversion of phosphoenolpyruvate to pyruvate. In mammals, the M1 isoform (PKM1) is expressed in most adult tissues . The M2 isoform (PKM2), an alternatively-spliced variant of M1, is expressed during embryonic development . Studies found that cancer cells exclusively express PKM2 (1-3). PKM2 is shown to be essential for aerobic glycolysis in tumors (Warburg effect) . When the M2 isoform is switched to the M1 isoform, aerobic glycolysis is reduced and oxidative phosphorylation is increased in cancer cells . These cells also show decreased tumorigenicity in mouse xenografts . Recent studies show that the oncogenic forms of FGFR1 directly phosphorylate Tyr105 of PKM2 and thereby inhibit the formation of active tetrameric PKM2 .</p>	



Western blot analysis of extracts from HELA , using PKM2 Ab. The lane on the left was treated with the antigen-specific peptide.

IMPORTANT: For western blot, incubate membrane with diluted primary Ab in 5% w/v milk , 1X TBS, 0.1% Tween@20 at 4°C with gentle shaking, overnight.



Affinity Biosciences
website: www.affbiotech.com
order: order@affbiotech.com

procedures. Not for resale without express authorization.